

# Aim8 Keyboard Tablet User's Guide

© 2000, Aim8 Product Development, Inc.

Distributed by:

Large Format Computing, Inc.

131 Monticello Street, San Francisco, CA 94132

Phone: (415) 722-0316 Fax: (415) 239-2008

Email: sales@language-keyboard.com

Section I: Installing the Tablet Driver Software

Section II: Installing the Aim8 Keyboard Tablet Software

Section III: Registering the Product

Section IV: Using the Aim8 Keyboard Tablet

## Section I: Installing the Tablet Driver Software

To install the Aiptek Tablet Driver Software, please follow the instructions found in the HyperPen USB Tablet Installation Guide that accompanies this product.

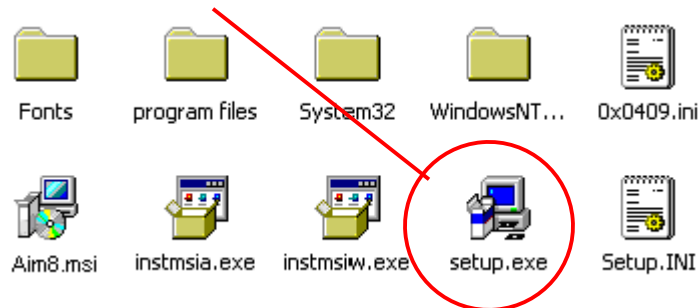
## Section II: Aim8 Keyboard Tablet Software Installation

Next, install the Aim8 Keyboard Tablet Software. This is a totally standard installation. So, if you are comfortable with the process, please skip this section and move on to Section III: Product Registration.

This document shows examples from a Windows XP installation. If you are installing this software on Windows 2000 or NT, these images may look different, though the content and process are identical.

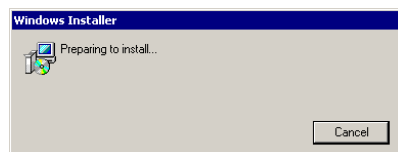
### Step 1: Setup Icon

Insert the Installation CD in your computer. Using Windows Explorer, find the correct drive and select the "Setup.exe" icon to begin the installation process.



### Step 2: Windows Installer

The software initialization phase begins. If you wish to discontinue installation at this point, you may do so by clicking on the "Cancel" command. Otherwise, wait for the next message to appear.



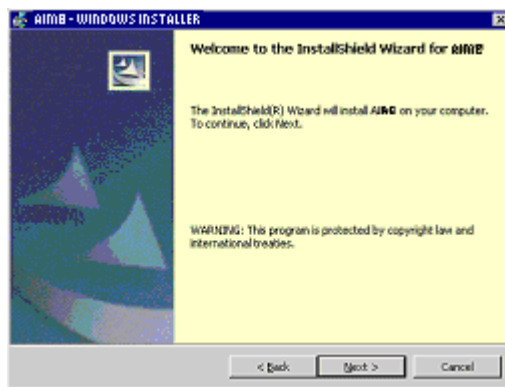
### Step 3: Aim8 Splash Screen

Following this, the Aim8 splash screen appears. Select the "Next" command to proceed or the "Cancel" command to exit the installation.



## Step 4: Welcome Screen

This screen basically informs you that both domestic and international copyright laws protect the product. To continue the installation, click on the “Next” command.

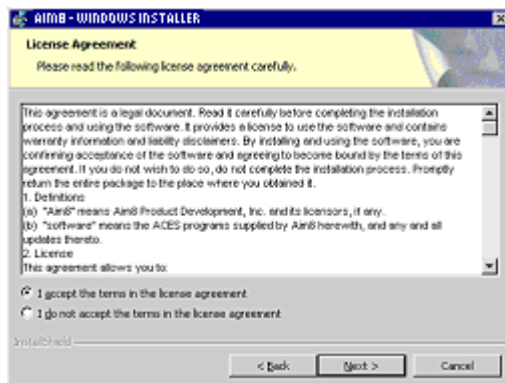


## Step 5: License Agreement

The License Agreement basically prohibits anyone from re-using the software or any portion of the software in any unintended way. This includes reselling the product unless you are authorized by us to do so. It also prohibits multiple installation or making copies of the software.

If you can't agree to these terms, select the “Cancel” command to stop the installation and then return the product to us for a refund.

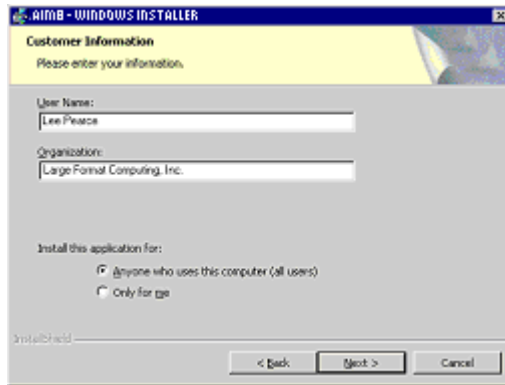
If you do agree to the complete terms stated in the contract, select the “Next” command to proceed with the installation.



## Step 6: Customer Information

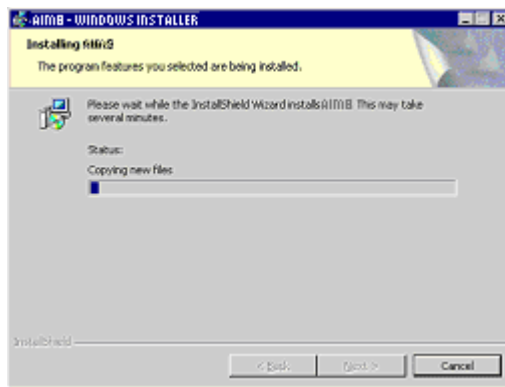
This screen displays the name of the user logged on to the current computer session.

You may also restrict usage of this program to yourself only or choose to allow access to any user by selecting one (and only one) of the choices under “Install this application for:” section.



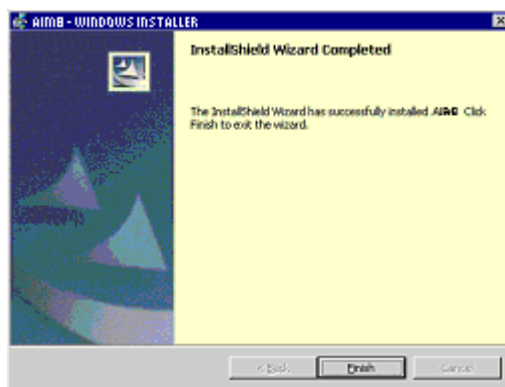
## Step 7: Installing Aim8 Language Keyboard Software

This launches the actual installation process. The “Status:” section shows the various actions as they occur and displays the rate of progress. You may select the “Cancel” command at any time during the installation to stop it. When finished, the system automatically advances to the next message.



## Step 8: Finish Message

This message signals the end of the installation process. Click on the “Finish” command to proceed.



## Step 9: Reboot and Desktop Icon

At this point, your system may or may not ask you to reboot the computer. In any case, when your computer is ready for use with the Aim8 software, an Aim8 icon appears on your desktop.

